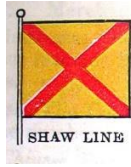


G.L. Shaw, Antung [Dandong] (Manchuria) & Foochow



Illustrated Fleet List (1852-1976)

By Howard Dick & Stephen Kentwell

All Rights Reserved 1988, 2019

May be cited with acknowledgement to www.oldchinaships.com

h.dick@unimelb.edu.au

skentwell@hotmail.com

This update posted 11 November 2020

G.L. Shaw born of a British father and Japanese mother in 1880 on Pagoda Island, Foochow, residing in Antung from ca. 1907 until 4/38 re-established at Foochow. Deceased 13/11/43 at Foochow.

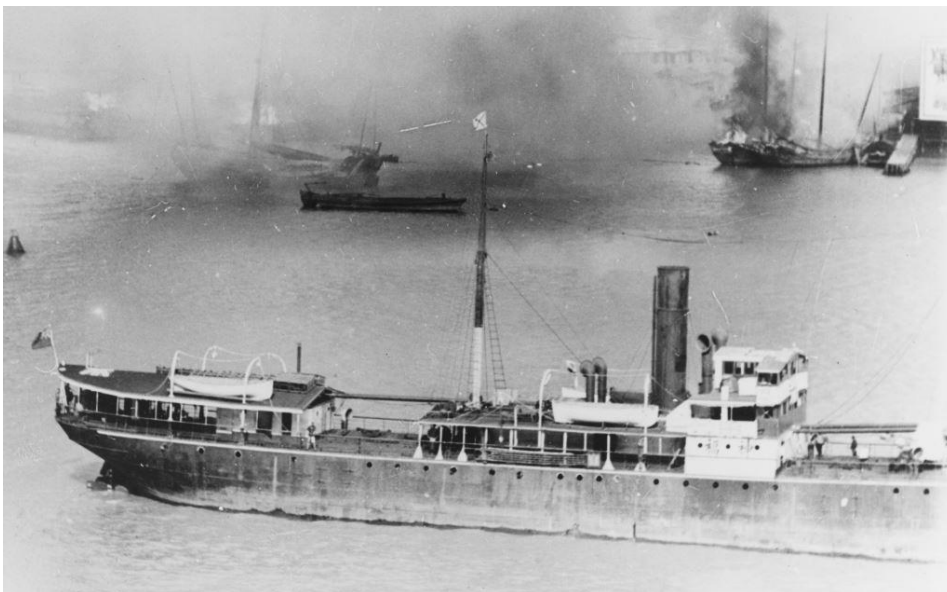
Trade includes Shanghai/Antung/Korean ports.

KWAILUNG (1932-4?) 152/32 w. lighter, 2xJapanese oil engines

Built by G.L. Shaw, Antung. War loss.

SHINFU 神福 (1932-43) 1452/01 T3cy, builders

Built by Ramage & Ferguson Ltd., Leith for Singapore & Sarawak S.S. Co., later Straits S.S. Co. Ltd., Singapore as RAJAH OF SARAWAK. 1932 sold to G.L. Shaw, Singapore r. SHINFU. 1943 following death of G.L. Shaw registered in the name of his administrator, J.C. Cobbett, Singapore. 1945 conv. to coal hulk at Trincomalee. 1950 b/u at Bombay.



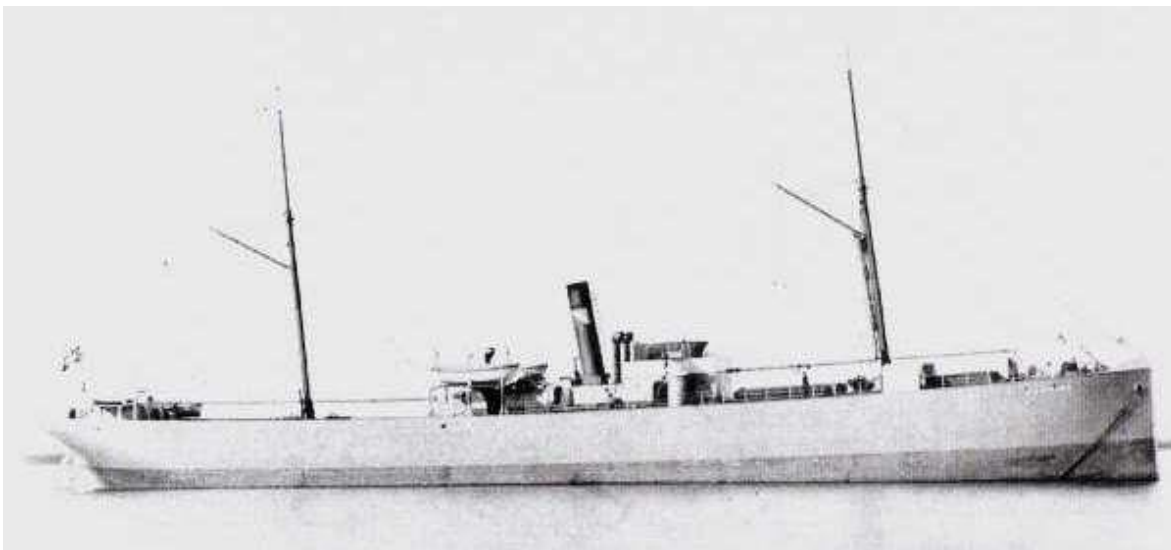
SHINFU at Pootung Point during the abortive Chinese bombing of I.J.N. cruiser *Idzumo* on 13 August 1937 (U.S. Naval History & Heritage Command NH77957).



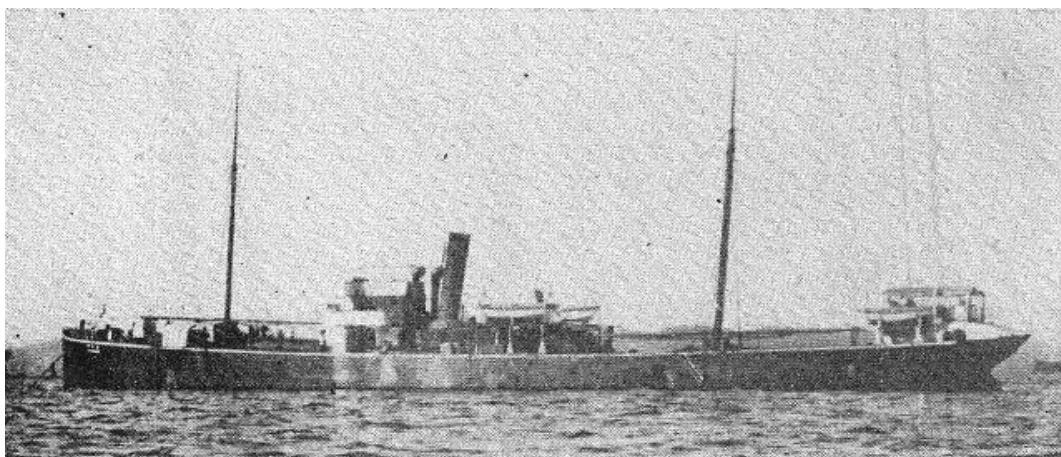
SHINFU under heavy escort departing Shanghai for Tinghai and Haimen with about 400 passengers and 500 tons of general cargo at 3 pm on 10 November 1937, following the Japanese bombing of Nantao (U.S. Naval History & Heritage Command NH77894).

HSIN TAILUNG (1933-??) 113/33 w. lighter, 2x oil engines mf'd 1926
Built by G.L. Shaw, Antung. Still listed LR 1947-48. NFI.

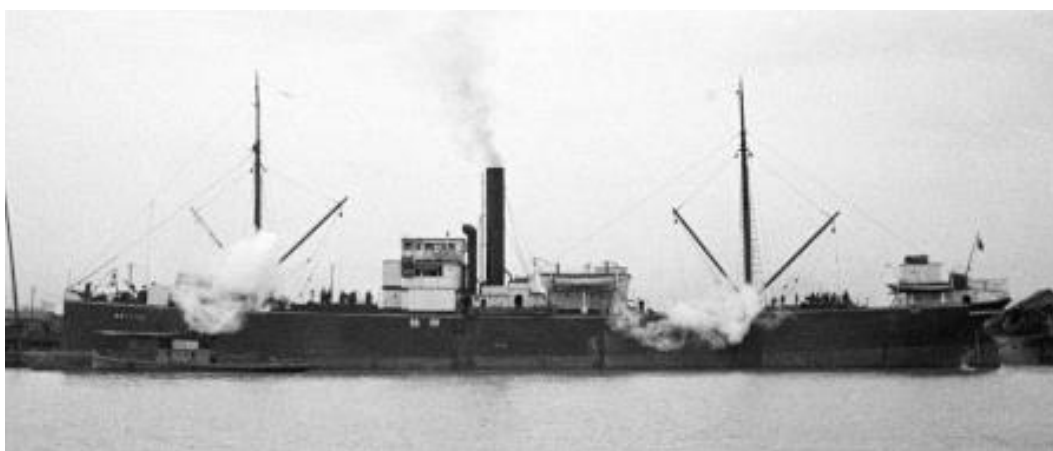
SHINYU 神祐 (1932-42) 1615/94 T3cy J. Clark & Co., Sunderland
Built by J. Blumer & Co., Sunderland for I/S D/S Terriers Rederi (W. Wilhelmsen, mgr), Tonsberg as TERRIER. 1909 sold to K. Kishimoto, Hamadera r. SHIN-YU MARU 神祐丸. 1912 sold to K. Fukagawa, Nishinomiya. 1914 sold to Seishichiro Nakamura, Nishinomiya. 1921 sold to Kuribayashi Shosen K.K., Tsurumi. 1932 sold to G.L. Shaw, Shanghai r. SHINYU. 2/3/42 scuttled at Surabaya.



TERRIER (www.sjohistorie.no).



SHIN-YU MARU (1924 *J. Steamships Register*).



SHINYU at Shanghai in about 1937, showing the outcome of a 1920s-type retrofit (Malcolm Rosholt UoB Ro-n0636).

SHINAI (1932-41) 2410/20 T3cy, builders

Built by Collingwood SB Co., Kingston, Ontario for Canadian Gov't Merchant Marine, Montreal as CANADIAN BEAVER. 1928 mgrs Canadian National Steamships Ltd. 1933 sold to W. E. Redfearn, Montreal. 1934 owners SS Beaver Ltd, Montreal. 1934 sold to G. L. Shaw, Vancouver r. SHINAI. 28/12/41 scuttled off Kuching. Raised by IJN, r. SHINAI MARU 志内丸, 16/9/44 bombed and sunk by US land-based aircraft in Tioro Strait, South Celebes while under Imperial Army control.



CANADIAN BEAVER (Walter E. Frost@VCA).

SHINHWA (1934-41) 1460/04 T3cy, builders

Built by Ramage & Ferguson Ltd., Leith for Singapore & Sarawak S.S. Co., later Straits S.S. Co. Ltd., Singapore as KUCHING. 1932 sold to Japanese shipbreakers but resold to Texas Company (China) Ltd., Hong Kong r. TEXACO XI. 1935 sold to G.L. Shaw, Hong Kong r. SHINHWA. 8/12/41 captured by Japanese forces in Chiling Bay near Hong Kong, 1942 r. TAKASAKI MARU. 17/9/45 sank in typhoon Makurazaki off Hagi (another report says sunk inside Susa Port nearby). The wreck subsequently caused damage to the local fishery stocks and after bureaucratic argument was eventually salvaged in 1950 and scrapped.



KUCHING (W. Laxon/Straits S.S. history).

SHINKUANG (1934-42) 2441/20 T3cy, builders

Built by Collingwood SB Co., Collingwood, Ontario for Canadian Gov't Merchant Marine, Montreal as CANADIAN FARMER. 1928 mgrs Canadian National Steamships Ltd. 1932 sold to W. E. Redfearn, Montreal, 1934 sold to U. F. Andersson, Nystad r. WESTER. 1934 sold to G. L. Shaw, Shanghai r. SHINKUANG. 6/4/42 sunk by Japanese warships in Bay of Bengal.



CANADIAN FARMER (Bowling Green State Univ.).
